

INSTALLATION GUIDELINES

ALL PRODUCTS OF NATIONAL SELECT FLOORS ARE MANUFACTURED AT THE HIGHEST QUALITY AND IN ACCORDANCE WITH AUSTRALIAN INDUSTRY STANDARDS.

IMPORTANT NOTICE

National Select Floors recommends installation by a professional flooring contractor or skilled tradesperson. The installation guidelines are a suggestion and are intended to help develop a plan in installing our flooring products. National Select Floors is not responsible for the installation of the product and is not responsible for damage by the installer during and after installation.

IT IS A REQUIREMENT TO INSPECT ALL PLANKS PRIOR TO INSTALLATION.

Once installed, all planks are considered accepted by the installer and/or homeowner; National Select Floors assumes no responsibility for product defects after initial installation.

PLEASE READ BEFORE INSTALLATION

It is best practice that installation of flooring should be one of the last steps of any project. If you have any concerns regarding the installation process or if the product appears doubtful in quality (such as grade, colour, finish, or appearance) please contact your flooring reseller **immediately** for review. The reseller is responsible for contacting National Select Floors for inspection and/or replacement. For any product that is deemed a manufacturing defect, National Select Floors is responsible for the **replacement of materials only**.

STONEGROVE LUXURY HYBRIDS

- Is intended for indoor use only.
- Is guaranteed for use only as a floor covering.
- Is to be installed using a floating method only. Adhesives are NOT to be used with this product.
- Is made with Stone Plastic Composite (SPC) and therefore very heavy.
Please use care and proper lifting techniques when handling full packs.
- Stonegrove Luxury Hybrids are NOT to be used as a moisture barrier and NOT recommended to be used in wet areas such as bathrooms and laundry.
- Should not be used in areas with high risk of flooding (i.e., outdoors, sauna, etc).
- Temperatures after installation should be kept between 0°C and 38°C.
- DO NOT install over existing carpet of any type.
- DO NOT install on existing floating floors of any type, including loose lay, and perimeter fastened sheet vinyl.
- DO NOT install directly on any structural bearers, joists or timber battens.

BEFORE INSTALLATION

- Ensure that all cartons contain the correct product, range, codes and colour.
- Packs should always be stacked with the bottom of the box facing down; never stack boxes on their sides and stack away from walkthrough traffic areas.
- Protect corners of packs from damage.
- It is recommended that all floor mounted cabinetry (including kitchen islands, kitchen carcasses, bathroom vanities, etc) is installed and secured prior to flooring installation.
We recommend that a floating floor installation be around the kitchen island bench.
- Always try to install your flooring in ample lighting to observe imperfections such as sheen differences.
- Inspect all planks for any visible defects or damage prior to and during installation.
- For best results and appearance, use a mixture of planks from several cartons.
- Spread the colour variations across the floor so that the variations are evenly spread across the flooring.
- Room temperature should be greater than 5°C during installation. Flooring must be installed in a temperature-controlled environment, allowing temperature changes only after installation is fully completed.

ACCLIMATISATION

The intention of acclimation is to bring the temperature of the new flooring close to that of the indoor environment. This means that the panels are not subjected to temperature shock and distortion upon opening, during and after installation.

We recommend that you acclimatise your floorboards for a minimum of 24-48 hours in the area where it is going to be installed at a suitable temperature of 16°C to 27°C.

SUBFLOOR PREPARATION

GENERAL SUBFLOOR PREPARATION AND PRECAUTIONS

- Subfloors should be clean and free of dirt and debris prior to installation.
- Subfloors must be structurally sound and flat prior to installation.
- All carpets, carpet pads and carpet tacks must be removed prior to installation.
- Variations in subfloor flatness should not exceed 3mm over a 3m diameter. Floors must be levelled to meet this specification prior to installation. Level by filling depressed areas with floor leveling compounds and sanding or grinding down any raised areas. Subfloor thickness must be a minimum of 15mm.

CONCRETE

- Concrete subfloors must be properly cured and allowed to dry for at least 60 days prior to installation. Test concrete subfloor for moisture prior to installation. If condensation appears on the film after 24 hours or concrete appears dark in colour, moisture is likely to be present and a calcium chloride test must be performed.

WOOD

- Wood subfloors must be structurally sound and be screwed or nailed to supporting beams.

INSTALLATION PROCEDURE FOR FLOATING FLOOR METHOD

MATERIALS REQUIRED

Tape Measure; Utility Knife; Flooring Cutter; Multi Tool; Rubber Mallet; Tapping Block; Pull Bar; Spacers; Ruler; Pencil; Safety Glasses; Broom or Vacuum Cleaner; Hardwood Floor Cleaner.

UNDERLAY

A separate underlay is not required for the Installation of Stonegrove Luxury Hybrid flooring.

Where additional height is required to match an existing floor, material such as sheets of plywood may be used. This will not affect performance or warranty.

PREPARING THE STARTER ROWS

It is very important that enough expansion gaps are kept between the flooring and all the walls. This is done by placing 10 mm spacers around all vertical walls.

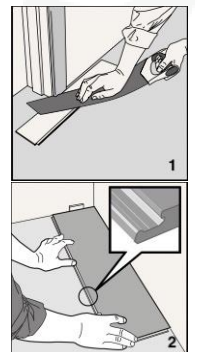
Measure the width of the room – perpendicular to the direction you intend to install the flooring. The last row of flooring should be no less than 38mm wide. If it is less, you should rip-saw the starter row narrower. Leave 10mm between the wall and the end of each strip in each row.

Start the second row with a strip of at least 400mm shorter than the strip used in the first row. This will avoid aligning or clustering the end joints.

LONG AND SHORT SIDE LOCKING TECHNIQUES:

The long sides of the planks are connected by angling the tongue into the groove – where the lower lip has a locking design. The short sides of the planks use a patented Uniclic locking system and are connected by simply folding down – locking with a reassuring “click”.

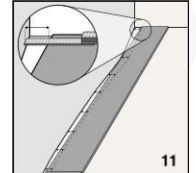
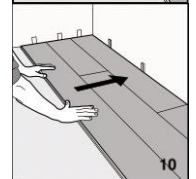
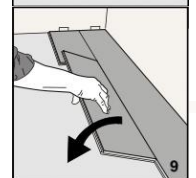
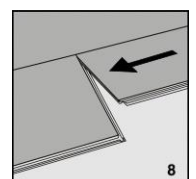
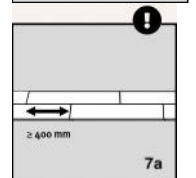
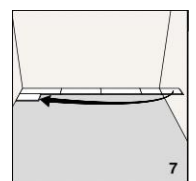
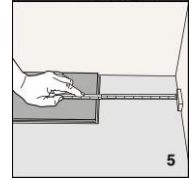
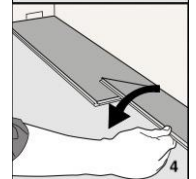
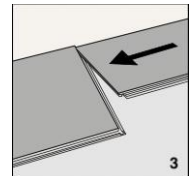
1. While door frames can be removed and raised, it is generally easier to cut them. Use a loose plank as a template and saw off the excess. To do this, you can use a multi-tool or a hand saw. Ensure that the floor is not pressed between the subfloor and the door frame.
2. Lay the first plank of the first row in the left corner with the tongue side facing the wall. Insert a wedge between the wall and the plank's left short side so there is a gap at least 8-10mm wide.



3. Position the second plank to the right short side of the first plank.
4. Fold down the second plank, making sure it is positioned tightly to the first plank – press down firmly and listen for the click to confirm the joint has locked.
5. Continue installation of the first row. When you are close to the wall on the right side, place a wedge at the wall and measure the length to determine the size of the row's last plank.
6. Cut the row's last plank to size. If you are using a hand knife, score with a knife and cut it face up.
7. To begin the second row, use the remainder of the cut plank used to finish the first row, be sure to insert a wedge between the wall and the plank's left short side so there is a gap at least 8-10mm wide. Then continue to lay the second plank.

Important information – the offset between the short-side joints in parallel planks from the first and second rows must be at least 400mm.

8. Position the second plank to the right short side of the first plank. Connect the long side into the bottom of the first row.
9. Fold down the second plank, making sure it's positioned tightly to the first plank – press down firmly and listen for the click that means it's locked in place.
10. Continue to install the row as before. When you have completed 2–3 rows insert wedges between the wall and the first row so there is a gap at least 8-10mm wide.
11. The first and last row may need to be adjusted if the wall is uneven. To achieve this, trace the wall profile to the first or last plank, cut, and install.



MAINTAINING YOUR STONEGROVE LUXURY HYBRID FLOOR

- Clean dust and debris regularly using a broom or vacuum with soft bristles.
- Clean any spills or liquids immediately.
- Mop as needed using a dampened mop and cleaner approved for use on vinyl floors. Never use abrasive cleaning implements, products, waxes, or bleach.
- Use felt protectors or other protective products under furniture, particularly pieces that are frequently moved. Avoid furniture with ball casters and only use wide, non-staining rubber casters. Protective mats should be used underneath office chairs.
- Do not drag heavy objects or furniture across the floor. When moving appliances or furniture, lay a protective item such as cardboard underneath and walk the heavy item across carefully.
- Place mats at exterior doors to reduce dirt and debris from being tracked onto the floor. Do not use mats with rubber or latex backers as they may cause discoloration or staining.

HOMEOWNER RESPONSIBILITIES

To sustain warranty and ensure quick and easy service in the event of a claim, the following requirements must be met:

- Flooring must be installed according to National Select Floors Installation Guidelines.
- Only appropriate vinyl floor cleaning products are used.
- At least Five (5) planks of Stonegrove Luxury Hybrids must be retained after installation for possible testing purposes and/or use for any repairs if required.
- The original sales receipt (or documentation confirming proof of purchase, details of purchase and installation date of the product) must be kept.

WARRANTY

PLEASE REFER TO WARRANTY ON OUR WEBSITE

NATIONAL SELECT
FLOORS